

MONTHLY MEMBERSHIP PROGRESS REPORT

District 317 C

Results as of: 8/31/2024

GMT:

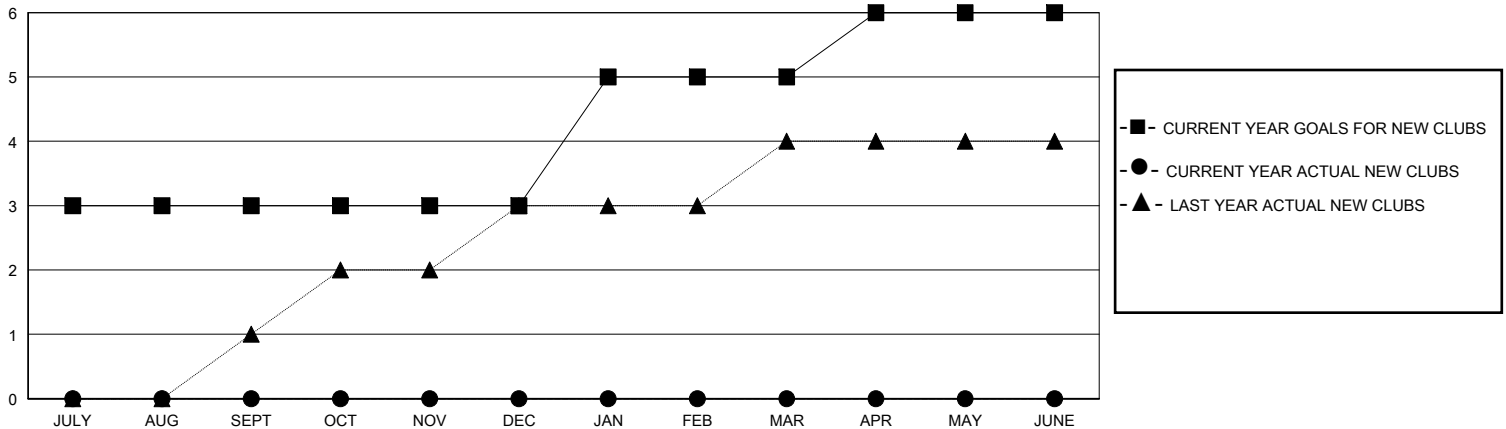
LOCATION INDIA

GMT CA

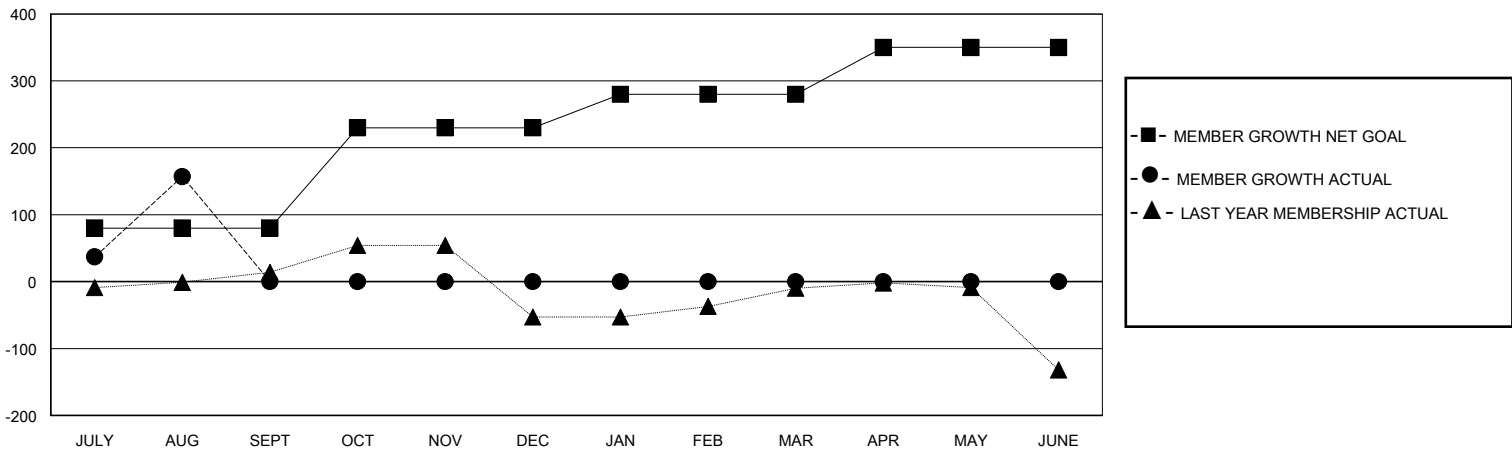
Clubs			
RESULTS FOR 2024-2025			
QUARTER	NEW CLUB GOAL	NEW CLUBS	DROPPED CLUBS
JULY/AUG/SEPT	3	0	0
OCT/NOV/DEC	0	0	0
JAN/FEB/MAR	2	0	0
APR/MAY/JUNE	1	0	0

Members			
RESULTS FOR 2024-2025			
QUARTER	MEMBER GROWTH NET GOAL	MEMBER GROWTH ACTUAL	DROPPED MEMBERS ACTUAL (including transfers)
JULY/AUG/SEPT	80	226	59
OCT/NOV/DEC	150	0	0
JAN/FEB/MAR	50	0	0
APR/MAY/JUNE	70	0	0

GOALS AND ACTUAL NEW CLUBS CUMULATIVE



GOALS AND ACTUAL MEMBERS CUMULATIVE



DROPPED CLUBS: 0	43 CLUBS OF 114 ADDED 1 OR MORE NEW MEMBERS	<u>GENDER DISTRIBUTION</u>	
<u>DROPPED MEMBERS</u>		MALE	2,557 (81.51%)
DECEASED	1	FEMALE	580 (18.49%)
CLUB CANCELLED	0	TOTAL FAMILY UNIT MEMBERS 1,021	
OTHER	58	FAMILY MEMBERS PAYING HALF DUES 571	
TOTAL	59		

[CLICK HERE FOR CUMULATIVE MEMBERSHIP DATA](#)